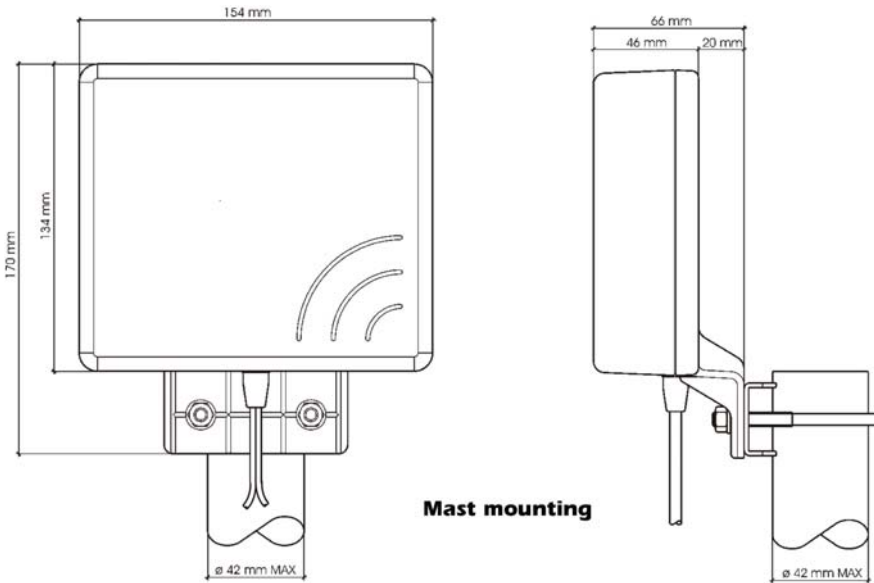


Fiche Technique

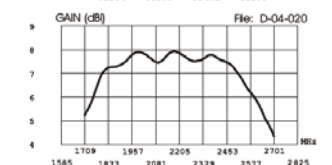
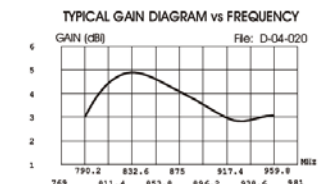
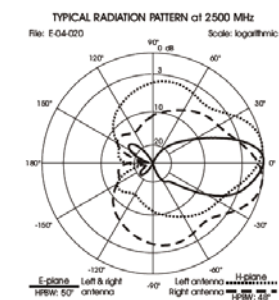
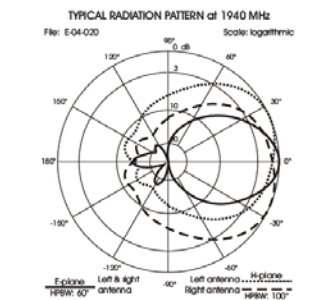
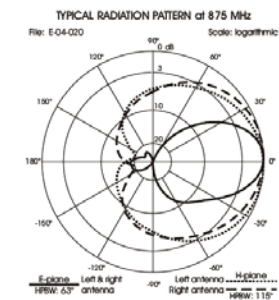
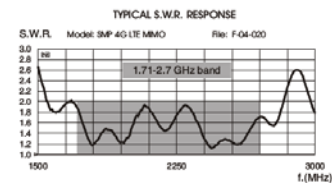
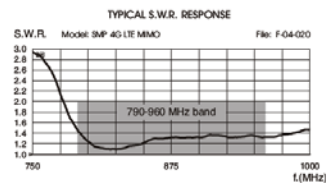
Antenne GSM 4G/LTE Directionnelle Fort Gain

1 Dimensions



2 Caractéristiques Electriques

Type	Directional mini panel - 2 wideband elements
Frequency Range (each element)	790-960 MHz & 1710-2700 MHz @ SWR ≤ 2
Impedance	50 Ω
Half Power Beam Width	see Typical Radiation Patterns
Polarization	Linear Vertical
Max gain (each element)	5 dBi @ 790-960 MHz 8 dBi @ 1710-2700 MHz
Front to back ratio (each element)	≥ 10 dB @ 790-960 MHz ≥ 15 dB @ 1710-2700 MHz
Correlation coefficient	< 0.1 for all bands
Element Isolation (each element)	≥ 10 dB @ 790-960 MHz ≥ 15 dB @ 1710-2700 MHz
Max Power @ 30°C ambient (each element)	20 Watts (CW) @ 790-960 MHz 8 Watts (CW) @ 1710-2700 MHz
Cable Type / Length	2 x RG316 / 30 cm
Connector	1 SMA Mâle



3 Caractéristiques Mécaniques

Materials	RAL 7035 Light Grey thermoplastic UV stabilized, galvanized steel
Wind Load @ 150 km/h	40 N
Wind Resistance	180 Km/h
Wind Surface	0.02 m ²
Operating temperature	-40°C to + 80°C
Dimensions (approx.)	154 x 134 x 46 mm without bracket
Weight (approx.)	420 gr
Installation Type	Mast: Ø25-42 mm with U-bolt (included) Wall: mounting screw (not included)